

RECORD OF U.S. PUBLIC LAND SURVEY CONTROL STATION

U.S. PUBLIC LAND SURVEY CORNER

3/2

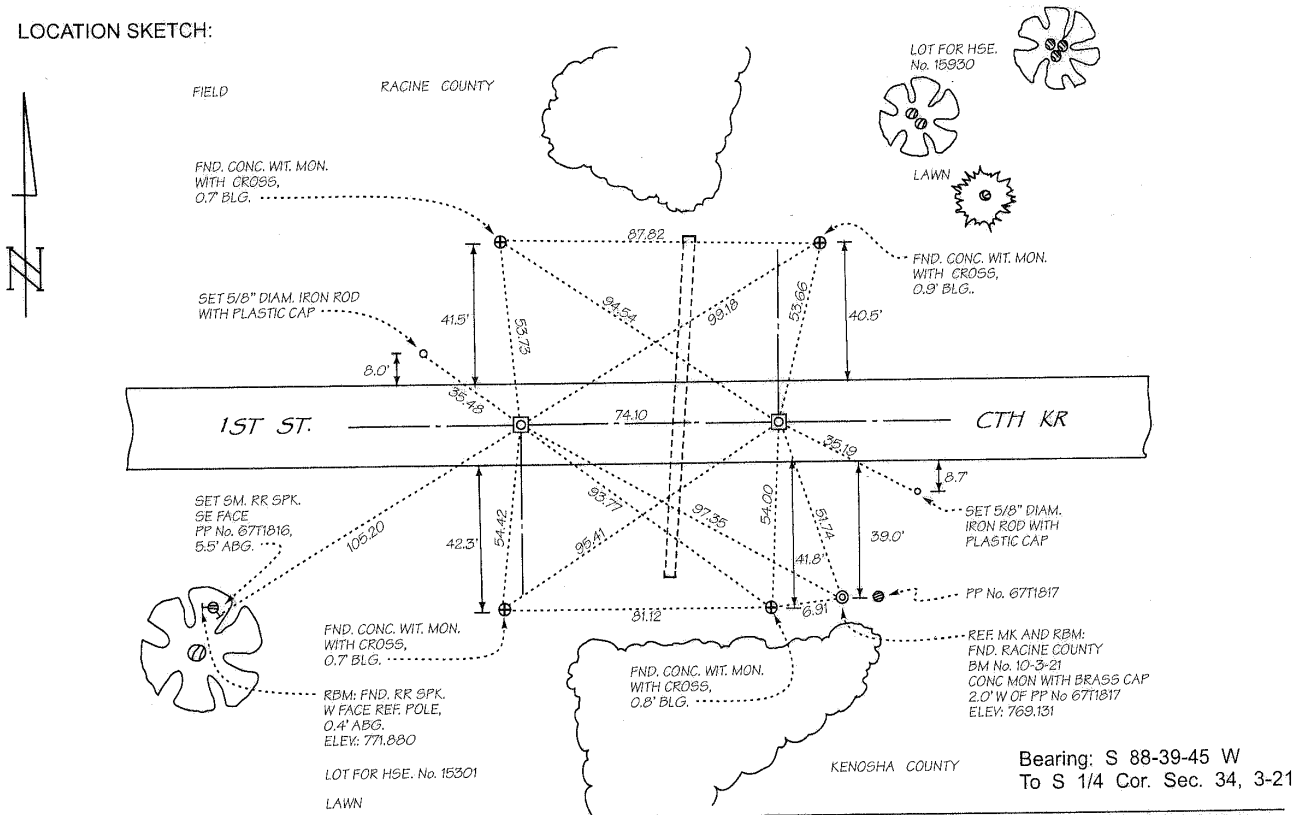
T 02 N, R 21 E, KENOSHA COUNTY, WISCONSIN

HORIZONTAL: NORTH AMERICAN DATUM OF 1927
VERTICAL: NATIONAL GEODETIC VERTICAL DATUM OF 1929
HOR. CONTROL: KENOSHA COUNTY 1985
VER. CONTROL: SEWRPC 2010
NORTHING: 250,515.36 USFT
EASTING: 2,539,802.66 USFT
ELEVATION: 774.51 FT
HOR. ACCURACY: 3rd ORDER, CLASS I
VERT. ACCURACY: 2nd ORDER, CLASS II

HORIZONTAL: NORTH AMERICAN DATUM OF 1983/2011
VERTICAL: NORTH AMERICAN VERTICAL DATUM OF 1988 (12)
HOR. CONTROL: SEWRPC 2017
VER. CONTROL: SEWRPC 2019
NORTHING: 250,526.48 USFT
EASTING: 2,508,267.01 USFT
ELEVATION: 774.32 FT GPS: _____ FT
HOR. ACCURACY: 3rd ORDER, CLASS I (COMPUTED)
VERT. ACCURACY: 2nd ORDER, CLASS II (COMPUTED)

RBM ELEV. IN SKETCH BELOW TIED TO NGVD29 DATUM. CONVERSION FROM NGVD29 -0.19 FT DERIVES NAVD88 HEIGHT

LOCATION SKETCH:



Bearing: S 88-39-45 W
 To S 1/4 Cor. Sec. 34, 3-21

SURVEYOR'S AFFIDAVIT:

STATE OF WISCONSIN) SS
 KENOSHA COUNTY)

As Kenosha County Surveyor, I hereby certify that following highway reconstruction, I set a 10-inch-diameter by 4-foot-long poured-in-place concrete monument with SEWRPC brass cap to mark the location of this closing corner on the township line; replacing a concrete monument with Kenosha County brass cap found and referenced by me on February 11, 1987; said concrete monument having been set to mark the location of this closing corner on the township line in August 1985 by Robert L. Smith, S-190, former Kenosha County Surveyor; replacing a cast iron plate in the then existing pavement set to mark the location of this closing corner on the township line in May 1968 by Donald E. Zenz, S-1088, Racine County Engineer; replacing a one-inch-diameter iron pipe found by Mr. Zenz and accepted as marking the location of this closing corner on the township line at a distance of 74.10 feet west of the standard corner then marked by a cast iron plate set in the then existing pavement—the closing distance recorded in the original U.S. Public Land Survey notes dated January 16, 1836, being 73.92 feet; that I have referenced the same as shown hereon; and that this record is correct and complete to the best of my knowledge and belief.

DATE OF SURVEY: 16 NOVEMBER 2010

Kurt Bauer

REGISTERED LAND SURVEYOR



S - 157

FORM PREPARED BY SOUTHEASTERN WISCONSIN REGIONAL PLANNING COMMISSION

PREPARED BY SOUTHEASTERN WISCONSIN REGIONAL PLANNING COMMISSION (SEWRPC)

02210050

CERTIFICATION APPLIES ONLY TO THE LOCATION SKETCH AND SURVEYOR AFFIDAVIT