

RECORD OF U.S. PUBLIC LAND SURVEY CONTROL STATION

U.S. PUBLIC LAND SURVEY CORNER

21/22
21/22

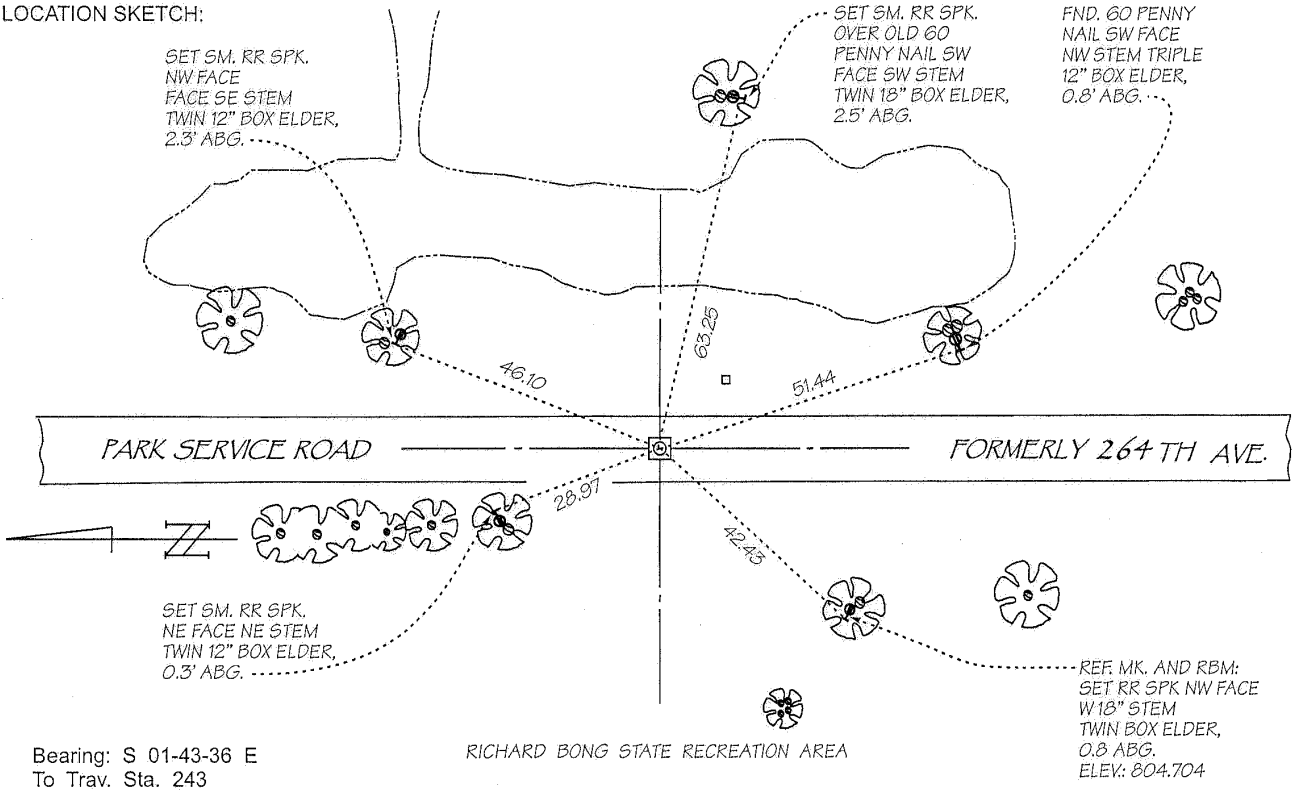
T 02 N, R 20 E, KENOSHA COUNTY, WISCONSIN

HORIZONTAL: NORTH AMERICAN DATUM OF 1927
VERTICAL: NATIONAL GEODETIC VERTICAL DATUM OF 1929
HOR. CONTROL: AERO-METRIC ENGINEERING INC. 1985
VER. CONTROL: SEWRPC 2012
NORTHING: 231,309.05 USFT
EASTING: 2,503,417.69 USFT
ELEVATION: 802.68 FT
HOR. ACCURACY: 3rd ORDER, CLASS I
VERT. ACCURACY: 2nd ORDER, CLASS II

HORIZONTAL: NORTH AMERICAN DATUM OF 1983/2011
VERTICAL: NORTH AMERICAN VERTICAL DATUM OF 1988 (12)
HOR. CONTROL: SEWRPC 2017
VER. CONTROL: SEWRPC 2019
NORTHING: 231,319.26 USFT
EASTING: 2,471,881.19 USFT
ELEVATION: 802.55 FT GPS: _____ FT
HOR. ACCURACY: 3rd ORDER, CLASS I (COMPUTED)
VERT. ACCURACY: 2nd ORDER, CLASS II (COMPUTED)

RBM ELEV. IN SKETCH BELOW TIED TO NGVD29 DATUM. CONVERSION FROM NGVD29 -0.13 FT DERIVES NAVD88 HEIGHT

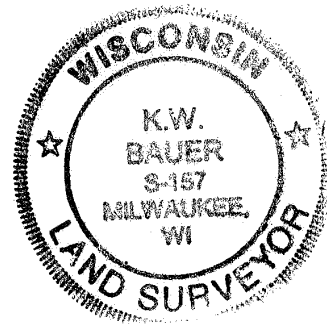
LOCATION SKETCH:



SURVEYOR'S AFFIDAVIT:

STATE OF WISCONSIN) SS
 KENOSHA COUNTY)

As Kenosha County Surveyor, I hereby certify that I set a concrete monument with SEWRPC brass cap to mark the location of this corner; replacing a broken concrete monument; said concrete monument with Kenosha County brass cap having been set to mark the location of this corner in October 1983 by Robert L. Smith, S-190, former Kenosha County Surveyor, using information maintained by the office of the Kenosha County Surveyor to perpetuate the location of this corner; that I have referenced the same as shown hereon; and that this record is correct and complete to the best of my knowledge and belief.



DATE OF SURVEY: 27 MAY 2008
 REVISED: 3 APRIL 2012

Kurt W. Bauer

REGISTERED LAND SURVEYOR

S - 157

FORM PREPARED BY SOUTHEASTERN WISCONSIN REGIONAL PLANNING COMMISSION

PREPARED BY SOUTHEASTERN WISCONSIN REGIONAL PLANNING COMMISSION (SEWRPC)

02200980

CERTIFICATION APPLIES ONLY TO THE LOCATION SKETCH AND SURVEYOR AFFIDAVIT