

RECORD OF U.S. PUBLIC LAND SURVEY CONTROL STATION

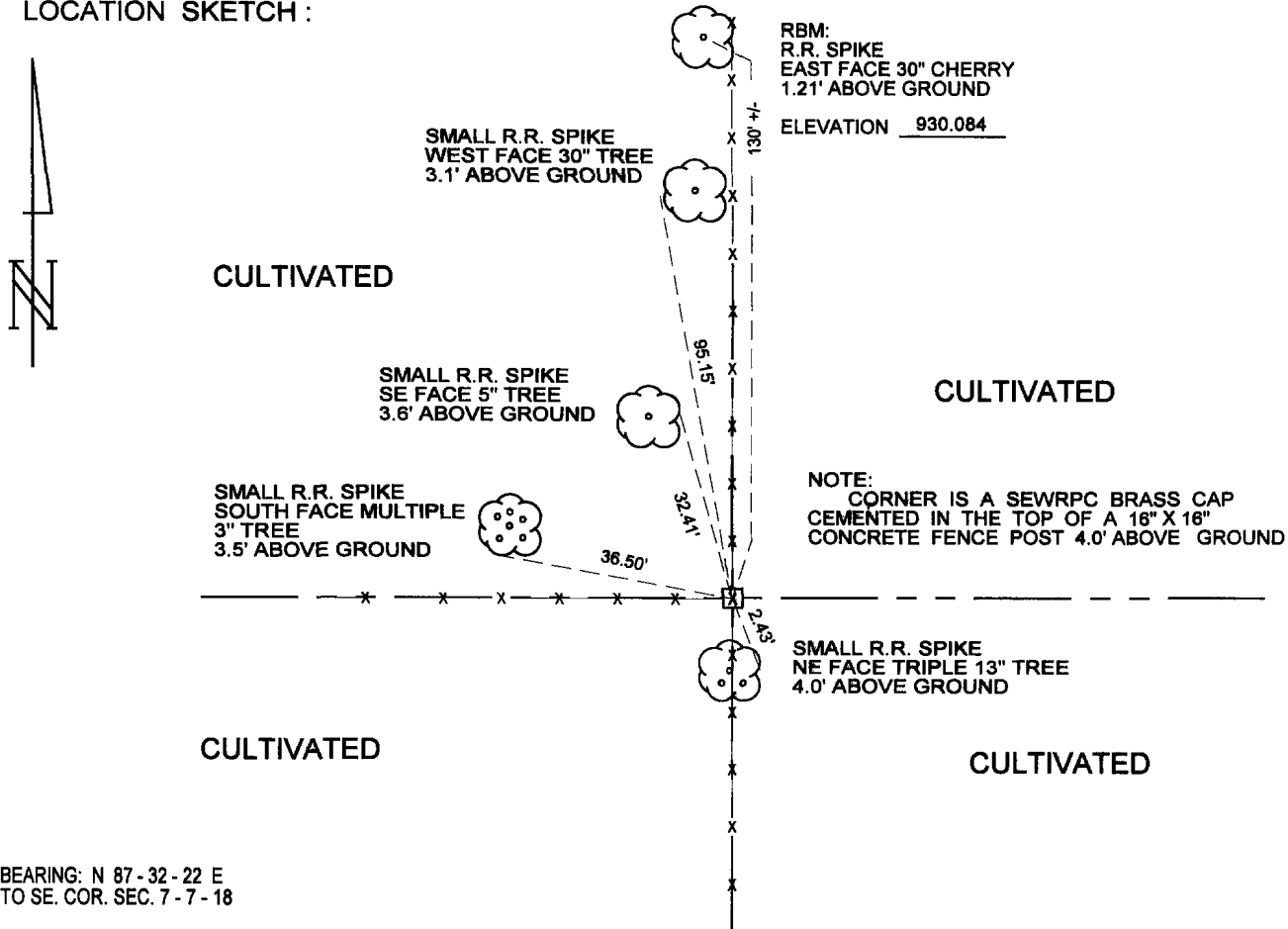
U.S. PUBLIC LAND SURVEY CORNER  $\frac{7}{18}$  T 07 N, R 18 E, WAUKESHA COUNTY, WISCONSIN

HORIZONTAL: NORTH AMERICAN DATUM OF 1927  
 VERTICAL: NATIONAL GEODETIC VERTICAL DATUM OF 1929  
 HOR. CONTROL: AYRES ASSOCIATES 1994  
 VERT. CONTROL: \_\_\_\_\_  
 NORTHING: 396,263.98 USFT  
 EASTING: 2,423,883.28 USFT  
 ELEVATION: 931.48 FT  
 HOR. ACCURACY: 3rd ORDER, CLASS I  
 VERT. ACCURACY: 2nd ORDER, CLASS II

HORIZONTAL: NORTH AMERICAN DATUM OF 1983/2011  
 VERTICAL: NORTH AMERICAN VERTICAL DATUM OF 1988 (12)  
 HOR. CONTROL: SEWRPC 2019  
 VERT. CONTROL: SEWRPC 2019  
 NORTHING: 396,272.16 USFT  
 EASTING: 2,392,346.12 USFT  
 ELEVATION: 931.49 FT GPS: \_\_\_\_\_ FT  
 HOR. ACCURACY: 3rd ORDER, CLASS I (COMPUTED)  
 VERT. ACCURACY: 2nd ORDER, CLASS II (COMPUTED)

RBM ELEV. IN SKETCH BELOW TIED TO NGVD29 DATUM. CONVERSION FROM NGVD29 0.01 FT DERIVES NAVD88 HEIGHT

LOCATION SKETCH:



BEARING: N 87 - 32 - 22 E  
 TO SE. COR. SEC. 7 - 7 - 18

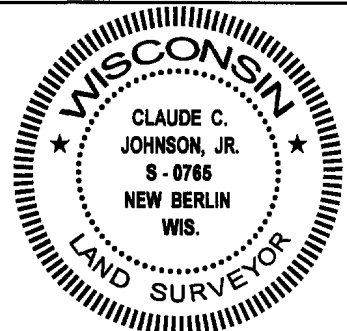
SURVEYOR'S AFFIDAVIT :  
 STATE OF WISCONSIN )  
 COUNTY OF WAUKESHA ) SS

I HEREBY CERTIFY THAT

I FOUND A LIMESTONE MONUMENT SET IN THE TOP OF A 16" X 16" CONCRETE CORNER POST 4' ABOVE THE GROUND AND CEMENTED A SEWRPC BRASS CAP IN ITS PLACE ON THE CORNER POST.

DATE OF SURVEY : DECEMBER 3, 1994.

*Claude C. Johnson, Jr.*  
 CLAUDE C. JOHNSON, JR. RLS. S-765



RECORD OF U.S. PUBLIC LAND SURVEY CONTROL STATION

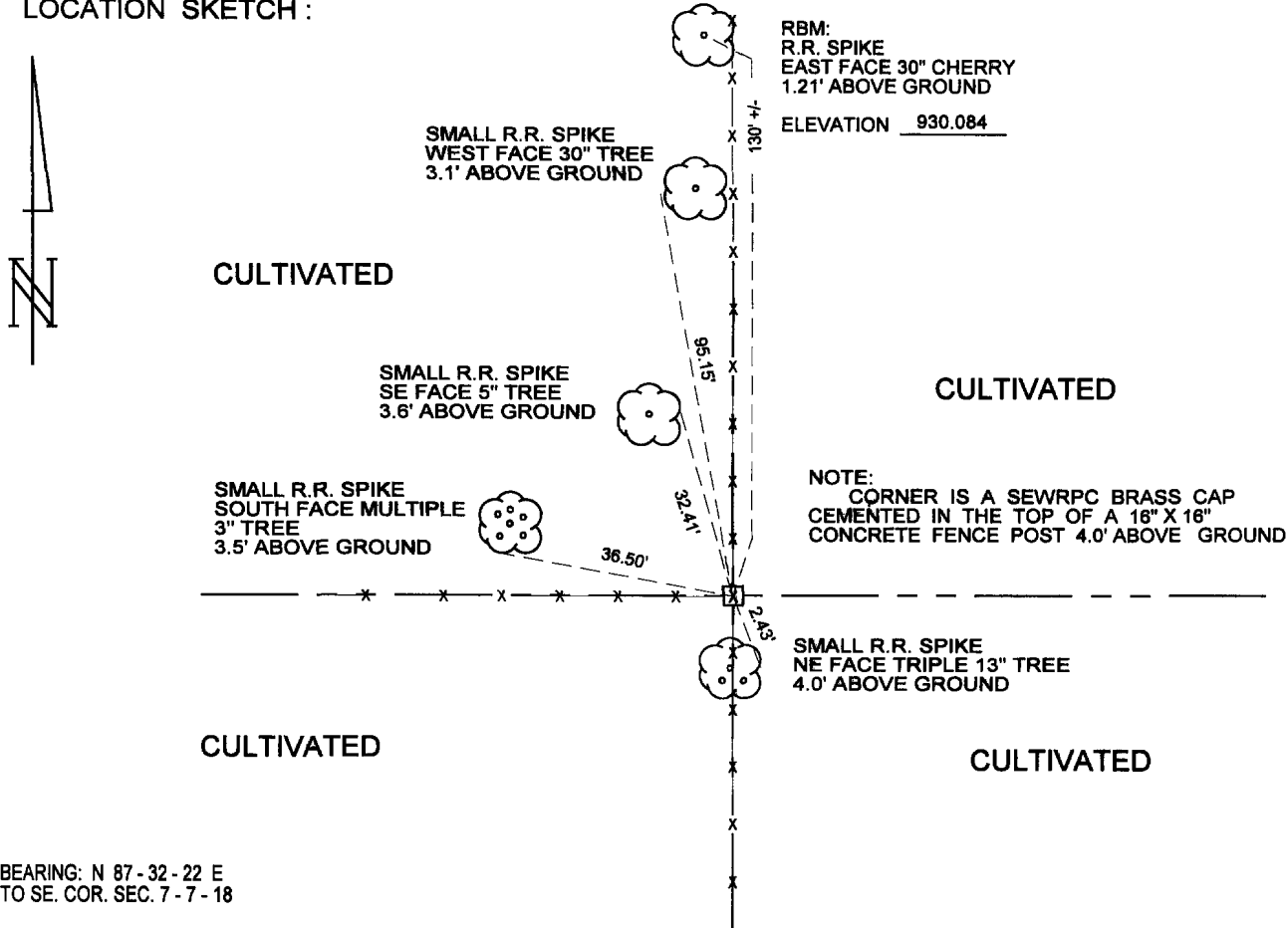
U.S. PUBLIC LAND SURVEY CORNER  $\frac{7}{18}$  T 07 N, R 18 E, WAUKESHA COUNTY, WISCONSIN

HORIZONTAL: NORTH AMERICAN DATUM OF 1927  
 VERTICAL: NATIONAL GEODETIC VERTICAL DATUM OF 1929  
 HOR. CONTROL: AYRES ASSOCIATES 1994  
 VERT. CONTROL: \_\_\_\_\_  
 NORTHING: 396,263.98 USFT  
 EASTING: 2,423,883.28 USFT  
 ELEVATION: 931.48 FT  
 HOR. ACCURACY: 3rd ORDER, CLASS I  
 VERT. ACCURACY: 2nd ORDER, CLASS II

HORIZONTAL: NORTH AMERICAN DATUM OF 1983/2011  
 VERTICAL: NORTH AMERICAN VERTICAL DATUM OF 1988 (12)  
 HOR. CONTROL: SEWRPC 2019  
 VERT. CONTROL: \_\_\_\_\_  
 NORTHING: 396,272.16 USFT  
 EASTING: 2,392,346.12 USFT  
 ELEVATION: \_\_\_\_\_ FT GPS: \_\_\_\_\_ FT  
 HOR. ACCURACY: 3rd ORDER, CLASS I (COMPUTED)  
 VERT. ACCURACY: 2nd ORDER, CLASS II (COMPUTED)

RBM ELEV. IN SKETCH BELOW TIED TO NGVD29 DATUM. CONVERSION FROM NGVD29 \_\_\_\_\_ FT DERIVES NAVD88 HEIGHT

LOCATION SKETCH :



BEARING: N 87 - 32 - 22 E  
 TO SE. COR. SEC. 7 - 7 - 18

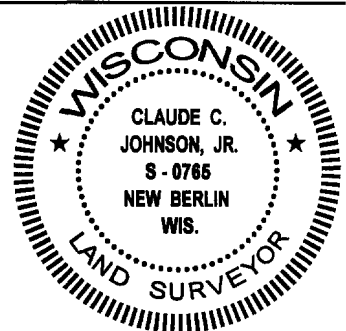
SURVEYOR'S AFFIDAVIT :  
 STATE OF WISCONSIN )  
 COUNTY OF WAUKESHA ) SS

I HEREBY CERTIFY THAT

I FOUND A LIMESTONE MONUMENT SET IN THE TOP OF A 16" X 16" CONCRETE  
 CORNER POST 4' ABOVE THE GROUND AND CEMENTED A SEWRPC BRASS CAP  
 IN ITS PLACE ON THE CORNER POST.

DATE OF SURVEY : DECEMBER 3, 1994.

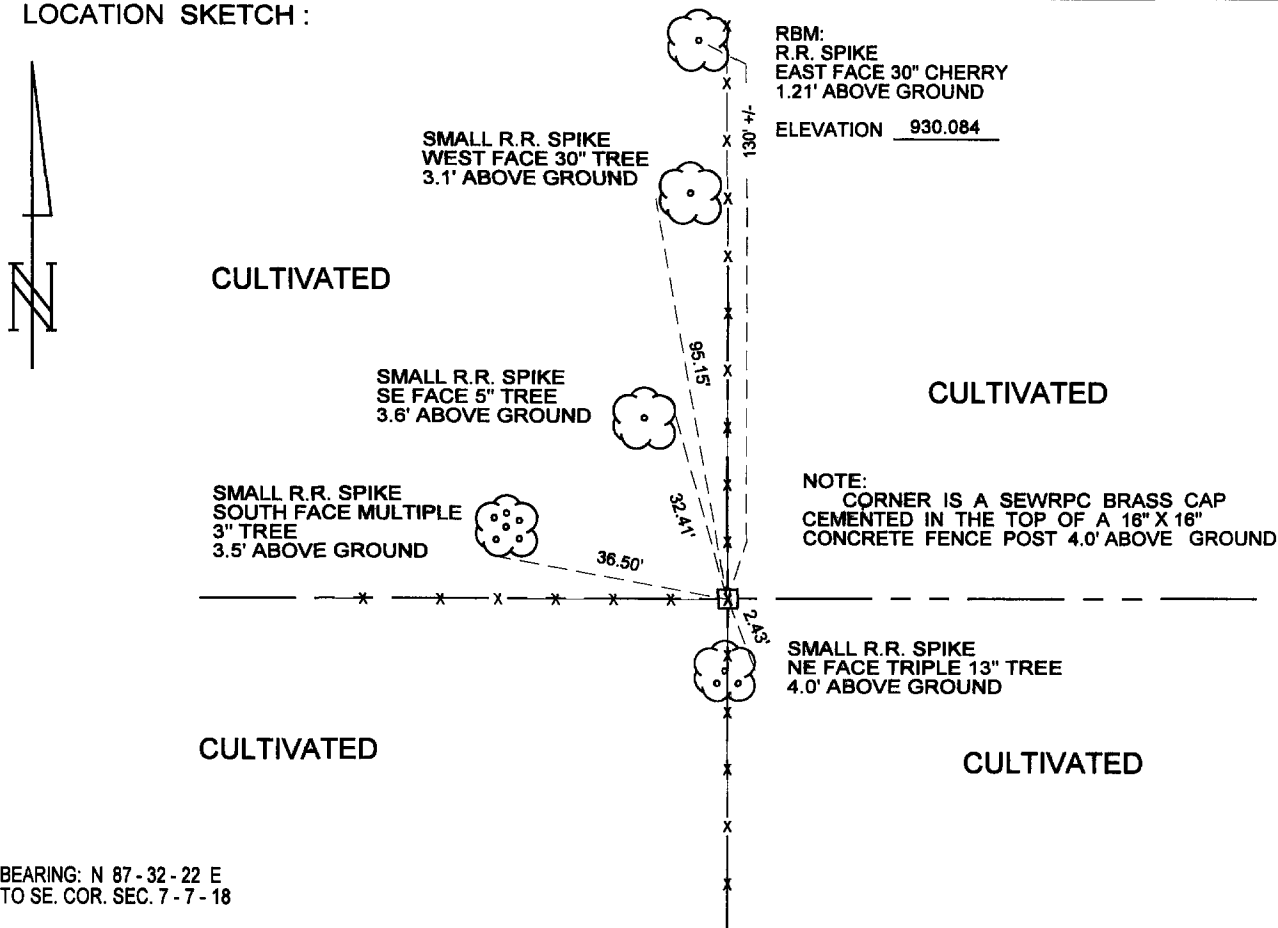
*Claude C. Johnson, Jr.*  
 CLAUDE C. JOHNSON, JR. RLS. S-765



# RECORD OF U.S. PUBLIC LAND SURVEY CONTROL STATION

U.S. PUBLIC LAND SURVEY CORNER  $\frac{7}{18} \frac{7}{18}$  T 7 N, R 18 E, WAUKESHA COUNTY, WIS.  
 GEODETIC SURVEY BY: AYRES ASSOCIATES YEAR: 1994  
 STATE PLANE COORDINATES OF: QUARTER SECTION CORNER  
                                     NORTH: 396,263.98  
                                     EAST: 2,423,883.28  
 ELEVATION OF STATION: 931.481  
 HORIZONTAL DATUM: WISCONSIN STATE PLANE COORDINATE SYSTEM, SOUTH ZONE  
 VERTICAL DATUM: NATIONAL GEODETIC VERTICAL DATUM OF 1929  
 CONTROL ACCURACY: THIRD ORDER, CLASS I THETA ANGLE: +01-05-24  
 HORIZONTAL: THIRD ORDER, CLASS I VERTICAL: SECOND ORDER, CLASS II

## LOCATION SKETCH:



SURVEYOR'S AFFIDAVIT:  
 STATE OF WISCONSIN )  
 COUNTY OF WAUKESHA ) SS

I HEREBY CERTIFY THAT

I FOUND A LIMESTONE MONUMENT SET IN THE TOP OF A 16" X 16" CONCRETE CORNER POST 4' ABOVE THE GROUND AND CEMENTED A SEWRPC BRASS CAP IN ITS PLACE ON THE CORNER POST.

DATE OF SURVEY: DECEMBER 3, 1994.

CLAUDE C. JOHNSON, JR. RLS. S-765

